



MOTHER

GROUP OF COMPANIES








Corporate Profile

Background

Established in 1997, Mother group comprises of several business units with more than 3,000 staffs and workers under its employment. We have our headquarter located at 44/46, 2nd Street, Lanmadaw Township, Yangon, Myanmar, and also have branches in Yangon, Mandalay, Muse and Kyan-Kinn.

With an expanse of background especially in trading, construction and industrial projects, our organization has also recently ventured into the logistics, energy and finance sectors.

Some of the authorized businesses of the company include production of:

-  Forest products and value-added outputs
-  Marine products
-  Construction materials and paints
-  Factory materials and raw-materials
-  Variety of equipment and tools



CONTENT

Mother Trading Co.,Ltd	I
Mother Construction Co.,Ltd	4
Kandawgyi Yeikmon Condominium	10
Green Light Block(Mother Industrial Co.,Ltd)	12
Wood Factory(Mother Industrial Co.,Ltd)	18
Plastic Factory(Mother Industrial Co.,Ltd)	21
Mother Logistics Co.,Ltd	23
Kerry Mother(KM) Terminal & Logistics	25
Mother Finance Co.,Ltd	27
Mother Travels & Tours Co.,Ltd	30
Future Plans	32



MOTHER TRADING CO.,LTD



Mother Trading is the trading arm of the group, located in Yangon, Mandalay and Muse, which imports, exports and distribute the followings:

IMPORT

- Buses
- 32-ton vehicles & spare parts
- light truck engines & accessories
- Cement
- RBD palm olein
- Soda ash
- Asbestos fiber
- Various steel products:
- Deformed bars, H-beam, I-beam, prime pre-painting steel sheet in coils
- Home utility products
- Bitumen



EXPORT

- Yellow maize
- White sesame seeds
- Green Mung beans
- Ground nut seeds
- Rice beans
- Sesame seeds (huskless)
- Myanmar white rice
- Rubber

DISTRIBUTION

- Glass
- Tiles
- Aggregate/crushed stones for roads



OFFICIAL COMPANY NAME

Mother Trading Co.,Ltd

BUSINESS TYPE/INDUSTRY

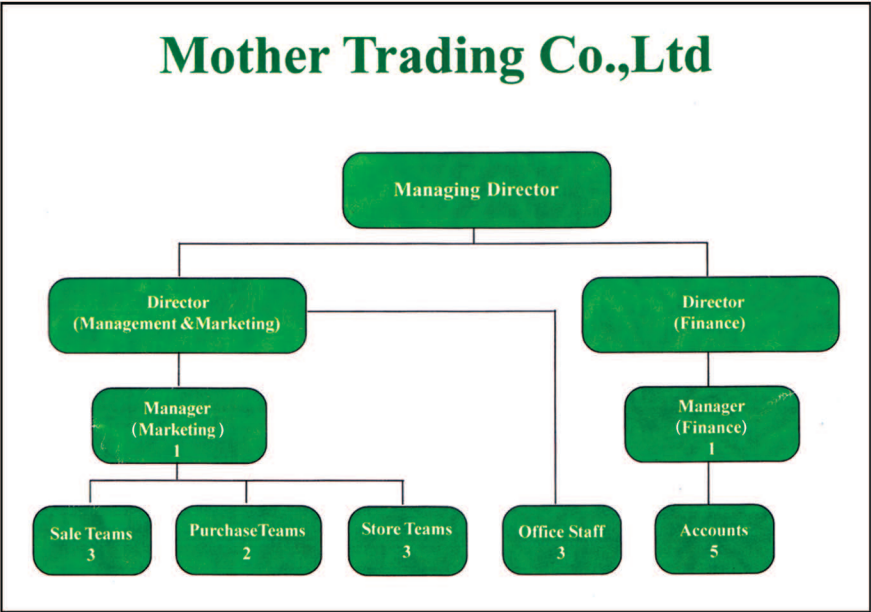
Trading

MANPOWER & ORG CHAT

15 persons in YGN

HISTORY

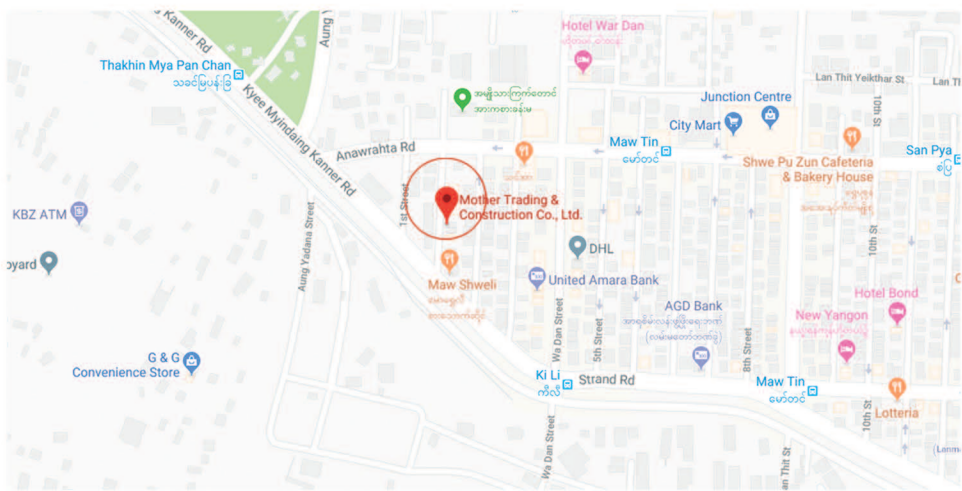
From Beginning Founder U Aung Myat
Since 1997 September 12.



ADDRESS WITH GPS MAP

No.44/46, 2nd Street, Lanmadaw Township, Yangon. (Ygn Office)

Ygn-Mdy Highway Road, 78th Road, Kywel Sel Kan, Pyi Gyi Tagon Township, Mandalay. (Mdy Office)



MANAGING DIRECTOR NAME

U Aung Myat

MANAGING DIRECTOR MESSAGE

“Mother Group is committed to taking care of our members in all areas of their lives and to get achievement of our goal. We are also a family business with a deeprooted pioneering spirit and a wealth of highly relevant experience and provide an ethical work of environment and impartial judgement for all of our employees. We are proud of our future and look forward to continuing our success alongside each of our partners.”

CONTACT NUMBER

01-218919, 218929, 218461, 218459, 2301053, 218460

EMAIL

mothertrading1997@gmail.com

WEBSITE

<http://www.mothergroupmyanmar.com>

OUR SERVICE VARIETIES

Construction materials – Purchase & sales.

PARTNER ORGANIZATION

Zin Htet Trading Co.,Ltd
Benhur Trading Co.,Ltd
Green Energy Construction Co.,Ltd
Myanmar Conch Cement Co.,Ltd
Steel King Co.,Ltd

OUR CLIENTS

iGreen Development Co.,Ltd
Ga Mone Pwint Co.,Ltd
Efficient Engineer Group Co.,Ltd
Grand Style Co.,Ltd
Htoo Construction Co.,Ltd
Crown Advanced Co.,Ltd
A1 Construction Co.,Ltd

DISTRIBUTION CHANNEL AND
EXPORTED COUNTRIES

- Import From China,Thailand and Local
- My company has ever done for Customer needful so I received Customer satisfaction
- My company has ever done goods service with transports and labours for customer

CERTIFICATE

UMFCCI membership No.11279 (15.1.2003)

OTHERS

Export/Import Registration No.11671(5.7.99)



MOTHER CONSTRUCTION CO., LTD





Mother Construction operates under the competent management of highly qualified senior engineers, and has in its employment, architects and engineers with a wide range of experiences in design, construction and maintenance.

We have vast experience in a variety of infrastructure, industrial, residential, commercial, and religious building projects. Some examples of completed projects are:

- ◆ Kandawgyi Housing Project
- ◆ Windsor Condo Project
- ◆ Myay Nu Condo Project
- ◆ Sport Stadium (Correctional Department, Insein)
- ◆ Hotel Regal (Bahan)
- ◆ Pon-Nyar-Yama Monastery (Thar Kay Ta)
- ◆ Inndakaw Monastery (Bago)
- ◆ Steel Warehouse (South Dagon)
- ◆ Steel Warehouse (Shwe Lin Pan)



- ◆ Six-storied Apartment Building (No.2 St,Ygn)
- ◆ Single-storied Residence (Naypyidaw)
- ◆ Khan Da Shwe Thain Taw (North Dagon)
- ◆ ACA Education Center (North Okkalapa)
- ◆ Steel Trestle for Nyaung Tan Fishery
- ◆ Steel Trestle for Khan Da Shwe Thain Taw (North Dagon)
- ◆ Rebuilding Ywama Village (North), Seikphyu Township,
- ◆ Pakokku District, Magway Division.
- ◆ Industrial Training Centre (Magway)
- ◆ Machine Shop, Foundry Shop & Welding & Heat Treatment
(Heavy Diesel Engine Factory Project, Thargaya)
- ◆ Simalite Shopping Complex



OFFICIAL COMPANY NAME

Mother Construction Co.,Ltd.

BUSINESS TYPE/INDUSTRY

Construction

OFFICE COMPOUND AREA

400' x 200' (2.014 Acres) Land

300' x 150' (office)

WORK VOLUME

Approx : 7,000,000 Sqft

MANPOWER & ORGANIZATION CHART

(1)from Chief Engineer to Assistant Junior Engineer	52 persons
(2)from Chief Finance Officer to Accountant	4 persons
(3)from General Manager to clerk	19 persons
(4)from Storekeeper to Store Operation Staff	7 persons
(5)from Site Engineer to foreman	27 persons
(6)from Mechanic /Heavy Machine Operator/ Driver	36 persons
Total	145 persons

All of the above units are already applied with the Organization Chart.

HISTORY

Mother Construction Co.,Ltd was registered as private company with Limited liabilities by the no of shares on 12th September, 1997.



OUR DONATION

- Mother Construction has already built accurately Magwe Industrial Training School, Thargaya Diesel Engine Factory, Autoclaved Aerated Concrete Blocks Factory (Phawkan) and Autoclaved Aerated Concrete Blocks factory (Danyinkone) according to the clients' customized BQ and designs.
- Moreover, Shwe Pyi Aye Condominium (1+2) (Sanchaung Condominium) (8/ ½ storey), Kyimyindaing Condominium (8/½ storey), Kandawgyi Condominium (10½ - storey), (12 ½ - storey), and high storey monasteries, schools have already constructed. As Corporate Social Responsibility (CSR) activities, donated renovating and construction of the houses, clinic, Primary School and Their at Sabel Nago Village, Thabaik kyin Township which are damaged because of earthquake in November 2013, costing 250 million kyats in total.
- We also donated and constructed 215 wooden houses, constructing 4 wells with generators, constructing 4 lakes and 120' x 30' primary school, etc., which have been damaged while the whole village, North Yama, SeikPhyu Township was sink by the flood in June, 2011 and costed 420 million kyats in total.
- For leprosy patients of Metta charity organization centre in Hlegu township, we constructed Office Building, Hostel, Ballroom, Dining room, Lake, Tank, Kitchen, costing 1500 millions kyats in total. Moreover we have constructed Municipal Hostel (192' x 20' x 20') near Aung Zay Ya bridge, Insein Township, and Nursing Home (40' x 34') at the East Dagon Township. 3 Storey Aung Charity Building (46' x 32'), Thanlyin Technological University Building (216' x 125' x 26') which is donated to Ministry of Education on 18-1-2019.

ADDRESS

- No.56, Sat Sayar U Tun Street, Zone (4), Shwe Pyi Thar Industrial Zone.



MANAGING DIRECTOR NAME

- U Aung Myat

MANAGING DIRECTOR MESSAGE

“Mother Construction Co.,Ltd which is organized and implemented with qualified construction engineers who are professional and subordinates will continue implementing modern international construction formats and designs that are controlled with reliable qualities & standards by the Ministry of construction, the Republic of the Union of Myanmar till the clients get full satisfaction.”

MISSION

To put as first priority of modern and high standard quality, meeting the standards, safety in construction workplace, green, healthy and pleasant environment, to protect environmental pollution and to achieve the clients' full satisfactions.

OUR PROJECTS

Projects which were constructed by Mother Construction Co.,Ltd are as follow :

	Project Value (In Lakh)
(1) Industrial Training School (Magwe)	8,140 Lakhs
(2) Diesel Engine Factory (Thargaya)	26,002.99 Lakhs
(3) Shwe Pyi Yeik Mon Condominium (1,2) Sanchaung	2,238.71 Lakhs
(4) Kyi Myin daing Condominium	2,711.28 Lakhs
(5) 12 Stories Sin Ma Lite Wet Market Construction	4,327.12 Lakhs
(6) Myawaddy Industrial Zone Construction	3,088.00 Lakhs
(7) Kandawgyi Yeikmon Condominium	90,000 Lakhs
(8) Yangon City Development Committe Apartment Project (Yankin)	18,379 Lakhs
(9) Autoclaved Aerated Concrete Block (AAC) factory (Danyinkone)	5,591.17 Lakhs
(10) Autoclaved Aerated Concrete Block (AAC) factory(Phawtkan)	17,877.76 Lakhs

ON GOING PROJECTS

	Project Value (In Lakh)
(1) A Bank Construction Project, Bahan Township, Yangon.	5,000 Lakhs
(2) 17th Street, Condominium Project Latha Township, Yangon	2,507 Lakhs
(3) Thiri Yeik Thar Condominium Project, Alone Township, Yangon	3,006 Lakhs
(4) Kerry Logistics Road Project (Ywarthargyi)	50,300,0 \$

FUTURE PROJECTS

- (1) Agricultural Products Showroom (Hlegu)
- (2) Jetty & Container Terminal Construction Project (Phawtkan)
- (3) 19 Stories Condominium Project (Kandawgyi)



OUR PARTNERS

- (1) Mother Trading Co.,Ltd
- (2) Mother Industrial Co.,Ltd
- (3) Mother Development Co.,Ltd
- (4) Mother Logistics Co.,Ltd.

CERTIFICATE & AWARD

- Certificated as Grade (A) Company by Myanmar Engineering Council.

ENVIRONMENTAL IMPACT & HOW TO REDUCE

Throwing wastes Systematically, which are From Head office & Projects sites by coordinating with YCDC Department of the respective townships.

- Monitoring the construction materials such as sand, gravel stones to the respective construction sites to prevent from falling down to the road.

- Monitoring and managing the noises from machines, generators,etc when the construction needs

to proceed during the night and also the hazards for environments.

- Monitoring the hazards of respective environment and noises from piling in the construction sites according to the necessities of the construction.

- While construction, the surrounding buildings, people and the vehicles may be destroyed and harmed because of the accidents, liking falling construction materials.To prevent this,protecting with safety nests and delegating duties with safety engineers.

OTHER

- We commit that 'Mother Construction Co.,Ltd will continue customized, updated and high qualified construction designs with high standards and trying as one of the leading partners in Myanmar Construction Industry.

KANDAWGYI YEIKMON CONDOMINIUM



MOTHER
GROUP OF COMPANIES

CONDOMINIUM NAME

Kandawgyi Yeikmon Condominium

DEVELOPER NAME

Mother Construction Co.,Ltd

COMPOUND AREA

10.22 Acres

NUMBER OF ROOMS

568 Rooms

MAN POWER

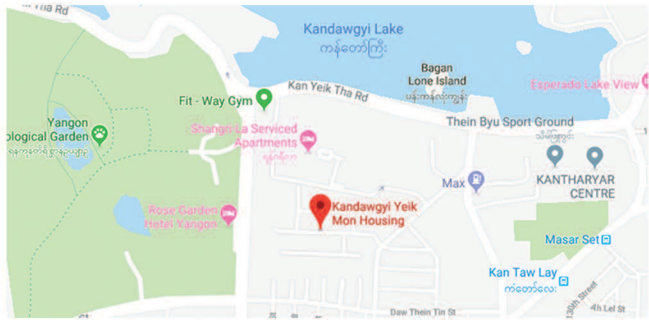
(22) Management Persons

LOCATION WITH GPS MAP

No (137), Upper Mandalay Street,
Kan Taw Lay (North),
Mingalar Taung Nyunt Township,
Yangon.

MANAGING DIRECTOR NAME

U Aung Myat



MANAGING DIRECTOR MESSAGE

“Likewise “Kandawgyi Yeik Mon Condominium”, We are Implementing best condominium projects coordinating and negotiating with our valued customers to fulfil their satisfaction. We are promoting Myanmar Construction Industry by uplifting Myanmar people living standard, and continuous improvement of the benefit of the Republic of the Union of Myanmar and ethnic groups in the whole country”

OFFICE PHONE

098557093

EMAIL

kandawgyihousing,mother@gmail.com

VISION

To Implement reliable, qualified, modernized and world-class architecture condominium projects better than kandawgyi yeikmon condominium projects to fulfil customer satisfaction.

MISSION

- To promote quality and standardization.
- Ensure Construction Site Safety.
- To protect environmental damage.

ROOM TYPE

Hall Type

FACILITIES

Car Parking + Fire Alarm

OUR CLIENTS

KBZ Bank, AYA Bank, Tokyo Pipe, Shwe Me Co.,Ltd,
May Flower Tower, 85 SOHO by Green Hub,
Horizon(Internet), Resource Group (RG),
Moe Htet Gabar Co.,Ltd

CERTIFICATE

Grade 'A' Certificate Certified by Myanmar Engineering Council.

OTHERS

Main Contractor "Mother Construction Co.,Ltd implemented "Kandawgyi Yeik Mon Condominium" mainly focus on quality & standardization. Mother Construction Co.,L td welcome business partner to collaborate future business.After that, we provide our valued customers with reasonable room prices.



Car Park



Fire System



Fire Alarm



CCTV

MOTHER INDUSTRIAL CO.,LTD





Brand Name

- ◆ Green Light Block

Products

- ◆ Autoclaved Aerated Concrete Block (AAC)
- ◆ Autoclaved Pressed Concrete Brick (APC)

Factories Compound Area

- ◆ 9 Acres (Factory 1)
- ◆ 23 Acres (Factories 2 + 3)





Factory Addresses

- ◆ Near Junction Danyin Gone, Insein Township, Yangon (Factory 1)
- ◆ Pale` Road, PhawtKan Ward, Insein Township, Yangon. (Opposite of MEC - Tyre Factory) (Factory 2 + 3)

Telephone

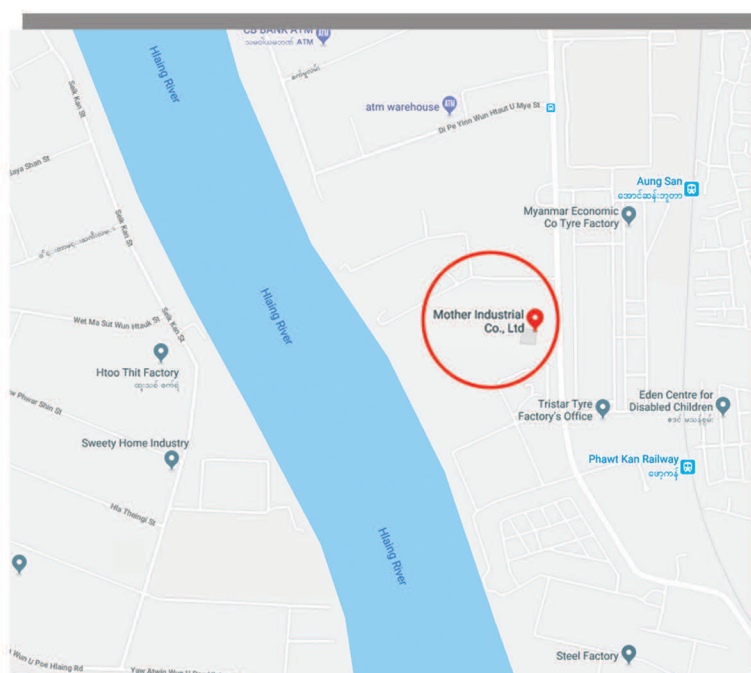
- ◆ +95 9 970 618 300, +95 9 970 618 700

E-mail Address

- ◆ mother.industrial@gmail.com
- ◆ miplant2n3@gmail.com

Facebook Page

- ◆ @greenlightblock
- ◆ @Motherindustrial



Objective

MOTHER INDUSTRIAL CO.,LTD has imported and manufactured by using domestic raw material according to the guidance of the Ministry of Industry of the Union of the Republic of Myanmar for manufacturing, distribution and utilizing Autoclaved Aerated Concrete (AAC) Blocks and Autoclaved Pressed Concrete (APC) Bricks instead of clay blocks with sophisticated new technology to conserve environment, soil and preserve farmlands.



Our Vision

To protect environment damage.

Our Mission

- To promote the quality of construction material.
- To promote the customer living standard and comfort.
- To provide affordable price of structure.





SAND WASHING MACHINE



CAPACITY - 250 M3 PER HOUR

PRIVATE JETTY



70 m x 10 m

VERTICAL LIME KILN



CAPACITY - 200 TONS
PER DAY

GRINDING PLANT



CAPACITY - 50 TONS PER HOUR
(1,000 TONS PER DAY)

ELECTRICITY SUB-STATION



PHAWT KAN - 10 MVA (33/11-6.6) KV
DANYIN GONE - 1250 KVA (33/0.4) KV

NATURAL GAS SUB-STATION



PHAWT KAN - 1.4 MMCF
DANYIN GONE - 0.6 MMCF

Certificate

Standard **ISO 9001:2015**
Certificate Register No. 01 100 1634913

Certificate Holder:



Mother Industrial Co., Ltd. (Plant 2)
Pale Road, In front of MEC Tyre Factory, Phawt Kan Ward, Insein Township, Yangon, Myanmar

Scope: Production and Delivery of Autoclaved Aerated Concrete Block (AAC) and Autoclaved Pressed Concrete Brick (APC)

Proof has been furnished by means of an audit that the requirements of ISO 9001:2015 are met.

Validity: The certificate is valid from 2017-03-13 until 2020-03-12.

2017-03-13

[Signature]
TÜV Rheinland Cert. Grant
Am Grauen Stein · 51105 Köln

www.tuv.com





TÜVRheinland
CERTIFIED

Management System
ISO 9001:2015

www.tuv.com
ID 9108634678



MOTHER INDUSTRIAL CO.,LTD.

ISO 9001:2015 CERTIFICATE AWARDING CEREMONY

2017

Phawt Kan



ISO Certified



Grand Opening Ceremony

AAC & APC Concrete Block Factories

Mother Industrial has started the development of three concrete brick factories in Yangon, two of which are located in Phawt Kan and one in Danyingone. Items produced at the factories are:

1. Autoclaved Aerated Concrete Blocks (AAC)
 - Production capacity – 450,000 m³ per year
2. Autoclaved Pressed Concrete Bricks (APC)
 - Production capacity – 90,000,000 pieces per year



MOTHER INDUSTRIAL CO., LTD
WOOD FACTORY

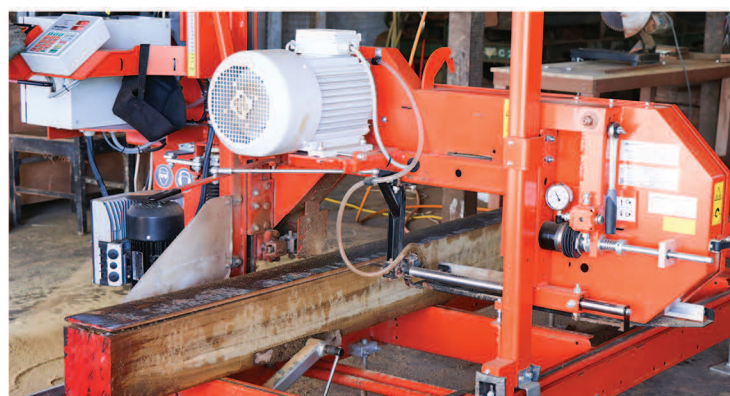


WOOD FACTORY

The wood factory owned by Mother Industrial Co., Ltd. is located at Kyaik Wine, Yangon. The factory processes and steams around 5,000 tons a year of different types of wood such as teak, Pyinkado, Rubber, Padauk, Pyinma, Yamanay and Inkanyin.

Some of the items produced are:

- ◆ Teak parquet blocks floor panels
- ◆ Doors and window frames
- ◆ Furniture, and
- ◆ Customized wood components of all shape and sizes





COMPANY NAME

Mother Industrial Co.,Ltd

BUSINESS TYPE

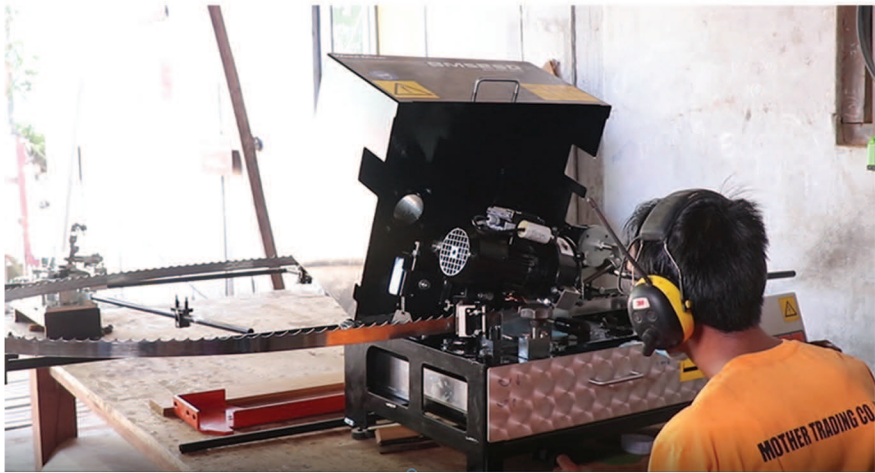
Wood Furniture Factory

MAN POWER

Permanent (17), Part time (14), Total (31)

HISTORY

It was a Daw Thein Blanket factory before in December (6), 1968. After nationalization in 1982, the government used that building as lumber warehouse and maintenance factory. Then government transformed it to the wood furniture factory with the help of Asian Development Bank. The Factory is hired to Mother Trading Co.,Ltd with Myanmar Investment Commission permit (61/2015) (Ma Na Tha)(14-7-2015). The duration is (50+10+10)Years System.



ADDRESS

No(23), Kyite Wine Pagoda Road, Ward (3), Mayangone Tsp, Yangon.

MANAGINE DIRECTOR NAME

U Aung Myat

MANAGINE DIRECTOR MESSAGE

“To Produce best quality wood furniture”

OFFICE PHONE

+95 9 340125013 , +95 9 448768888

EMAIL

oaksoe@mothertrading.com

VISION

Manufacturing and Distributing, Timber & Wood furniture products by using qualified raw materials without defects. We will continue to extend international export market to get foreign currency income.

MISSION

Manufacturing and distributing timber & wood furniture using quality raw materials without defects. We will continue to extend international export market to get foreign currency income.



SERVICES/PRODUCTS

Any size of parquet flooring, Super decking for boat/yacht Decking, wooden doors, wooden door frames, tables, timber (Export/Local), Lumber for Construction Projects, Teak parquet blocks floor panels, Doors and window frames, Furniture and Customized wood components of all shape and sizes.

PARTNER ORGANIZATION

Mother Construction Co.,Ltd.
AHYONE OO Construction,
A1 Construction Co.,Ltd.
Asia World Construction Co.,Ltd,
iGreen Construction Co.,Ltd.
BYMA Myanmar Limited
(Pennisula Plaza, Sule)
Myanmar Timber Merchants Association,
Myanmar Arts & Crafts Association,
Ministry of Natural Resources and Environmental Conservation.

CLIENT

Mother Construction,
AHYONE OO Construction Co.,Ltd. ,
A1 Construction Co.,Ltd,
Asia World Construction,
iGreen Construction Co.,
BYMA Myanmar Limited (Pennisula Plaza, Sule)
First Mega Construction,
Future Home City Construction,
Yuzana Construction,
Heaven City Construction,
Summit Palace Construction,
Myanmar Summit Construction.

SUPPLY CHAIN

Shipping raw materials from Myanmar Timber Enterprise after closing tender.

CERTIFICATE

Ministry of Industry Registration Number (Ya Ka/ 4535)

OTHERS

Fire Resistant door in Future Plan.



MOTHER INDUSTRIAL CO., LTD
PLASTIC FACTORY



PLASTIC FACTORY

At Hmawbi, Mother Industrial also owns a factory where plastic bags of different types and sizes are manufactured.



OFFICIAL COMPANY NAME

New General Industrial Co.,Ltd

FACTORY CONTACT NUMBER

01-218463

BUSINESS TYPE/INDUSTRY

Shopping Bags Industry

E-MAIL

newgeneral.ho@gmail.com

RAW MATERIAL

Imported from USA,Dubai,Singapore,Japan, Thailand

VISION

To become world wide shopping bags Company

COMPOUND AREA

72 Acres

MISSION

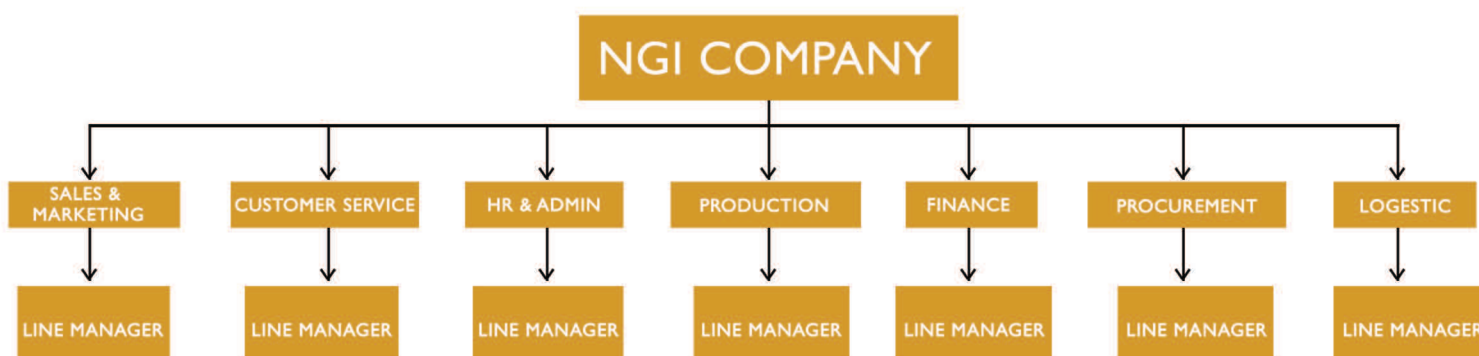
To become Market leader of shopping Bags industry in southeast asia at 2030

MANPOWER & ORG CHART

164 persons

OUR PRODUCT VARITIES

5*9,6*11,6*14,8*15,9*18,12*20,12*24,14*28, Y14,Y17,Y20



HISTORY

Established in 2010 and started with 100 people

OUR CLIENTS

export to USA, Japan,
Local Market Dealers

ADDRESS

No.3 Plastic industry,Hmawbi

MANAGING DIRECTOR NAME

U AUNG MYAT

MANAGING DIRECTOR MESSAGE

"Be Simply Live with highest Ambition"



DISTRIBUTION CHANNEL AND EXPORTED

Whole sale Channel,Agent and Retail outlets,
USA, Japan

MOTHER LOGISTICS CO.,LTD



Mother Logistics is a company developing a river port and commodity exchange centre project at Phawt Kan on the outskirts of Yangon.

The company invests in infrastructure and equipment to transport agricultural products from different parts of Myanmar.

A general cargo port will be constructed and along with an international-standard commodity exchange center which provides modern storage solutions, normal and temperature-controlled warehouses, crop-cleansing technologies, efficient container yard management and other value-added services.





OFFICIAL COMPANY NAME

Mother Logistics Co.,Ltd

BUSINESS TYPE/ INDUSTRY

Logistics

MANPOWER

Joint Venture with Kerry Logistics

ADDRESS

No.44/46, Lanmadaw (2)streets,
(1)Quarter, Yangon.

MANAGING DIRECTOR NAME

U Aung Myat

CONTACT NUMBER

01-2300919, 01-2300929

EMAIL

mothertrading2015@gmail.com



KERRY MOTHER(KM) TERMINAL & LOGISTICS





DRY PORT GRAND OPENING CEREMONY





OFFICIAL COMPANY BUSINESS NAME

Kerry Mother(KM) Terminal and Logistics Ltd

BUSINESS TYPE/INSUSTRY

Logistics / Dry Port

MANPOWER & ORG CHAT

75

MACHINE POWER

- 24 Prime Movers with 24 trailers
- 1- side leader trailers, 4 (3 tor fork lift)
- 2- (5 tons fork lift), 2 Reach stackers 45H 45H
- 3- Manual Hand Pallets, 1 Hijet

DRY PORT & WAREHOUSE ADDRESS (YGN)

Plot B, Yangon-Mandalay Railway Road,
Ywar thar gyi, East Dagon Township, Yangon

DRY PORT & WAREHOUSE ADDRESS (MDY)

Plot B1, Yangon-Mandalay Railway Road,
Myint Nge, Amarapura Township, Mandalay

OFFICE AD

#19-14, Sule Square, 221, Sule Pagoda Road,
Kyauktada Township, Yangon

MANAGING DIRECTOR NAME

Mr.Kledchai Benjaathonsirikul

CONTACT NUMBER

01 9255050-1-2

E-MAIL

shine.thiha@kerrylogistics.com

WEBSITE

www.kerrylogistics.com

VISION

Provide one-stop service for logistics

OUR SERVICE VARIETIES

Warehouse, custom, transportation

PARTNER ORGANIZATION

Kerry Freight Myanmar

DISTRIBUTION CHANNEL

YGN-MDY

CERTIFICATE

Business Licenses

OTHERS

MIC, Ministry of Transport & Communication



MOTHER FINANCE CO.,LTD





Mother Finance is another company being recently set up that will provide the following financial services:

RAISING OF FUNDS

- Soliciting and raising long term deposits / investments from foreign and local investors.
- Receiving loans from foreign and local banks and financial institutions.

LENDING OR ADVANCING OF FUNDS

- Lending with or without collateral
- SME Loans
- Development Loans
- Equipment Financing
- Hire / Purchase
- Security Agency / Collateral Agency

And other financial services

OFFICIAL COMPANY/BUSINESS NAME

Mother Finance Co., Ltd.

BUSINESS TYPE/INDUSTRY

Financial Services

MANPOWER

- . CEO/MD (1)
- . Tech Development and Support (10)
- . Loan Operations (6)



HISTORY

Mother Finance obtained the non-bank financial institution (NBFI) license in 2016 and began full operations in June 2018.

ADDRESS WITH GPS MAP

No.44-46, Street 2, Ward 1, Lanmadaw Township, Yangon, Myanmar

MANAGING DIRECTOR NAME

Daw Theta Aye

MANAGING DIRECTOR MESSAGE

At Mother Finance, we are committed to building a world where under-served people everywhere in Myanmar have financial access, knowledge, choice, and control. Myanmar people need access to financial products and services, including credit and all the opportunity credit brings.

Within the array of financial products and service offerings, they need to have the right tools, information and knowledge to make informed choices, so they can do what they wish to do, what they need to do, and what they should do with their money and income. Finally, we want every person to be in control of their finances, as active participants in their own financial lives-whether they are borrowing, budgeting, learning, saving, or investing.

CONTACT NUMBER

01 230 2186

EMAIL

bd@motherfinance.com.mm

WEBSITE

<http://www.motherfinance.com.mm>



VISION

To transform the financial sector in Myanmar to make credit more affordable and investing more rewarding. Mother Finance's technology platform enables it to deliver innovative solutions to borrowers and investors in the long term.

MISSION

Accountability, Integrity, Collaboration, Excellence, Diversity

OUR SERVICES

Employee Loan, Step-up (Micro) Loan, Education Loan, SME Loan.

Mother Finance Mobile Application and Digital Lending Platform: We provide consumer loans through our digital lending mobile application that automates underwriting process in real time using thousands of alternative data signals. Anyone with a smart phone in Myanmar can apply for an secured loan and receive a quick credit decision, regardless of their financial history.

We offer fast, easy and customized loans to borrowers and help them access to finance, build digital credit histories, or financial identities, over time.

OUR CLIENTS

Within 6 months of operations, we have acquired around 12,000 registered users and processed about 2,000 loans.

PARTNER ORGANIZATION

RGO 47, Lu Gyi Min, Ayerhinthar Group, Cars DB, Mother Group of Companies, Myanmar Tutors, Food2U

CERTIFICATE

NBFI/FC (R) -11/08/2016



MOTHER TRAVELS & TOURS CO., LTD



OFFICIAL COMPANY/BUSINESS

Mother Travels & Tours Co.,Ltd.

BUSINESS TYPE/INDUSTRY

Travels & Tours

MANPOWER & ORG CHAT

5

HISTORY

Mother Travels & Tours Co.,Ltd has been established in Yangon since 2012 May 14 and was registered under Myanmar Company Act-(Registration No.490/2012-213), duly organized corporation exciting under the licence of Ministry of Hotels & Tourism (Myanmar), Licence No.kha 3982 in 2018 September. Our company is also certified affiliates of Union of Myanmar Travel.Association (UMTA),with membership no.2154.We value honestly to customers and integrity.We provide the best travel itinerary services, ticketing services, hotel reservation, transport, tours, car rental,local and international flights.

ADDRESS WITH GPS MAP

No.44/46, I Quarter,2nd Street, Lanmadaw

MANAGING DIRECTOR NAME

U Aung Myat

MANAGING DIRECTOR MESSAGE

“To achieve a successful travel group by working together in unity for long term.”

OFFICE CONTACT NUMBER

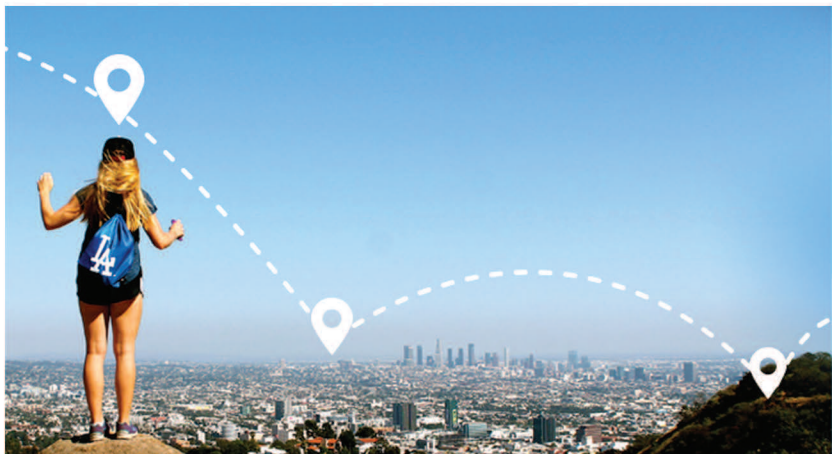
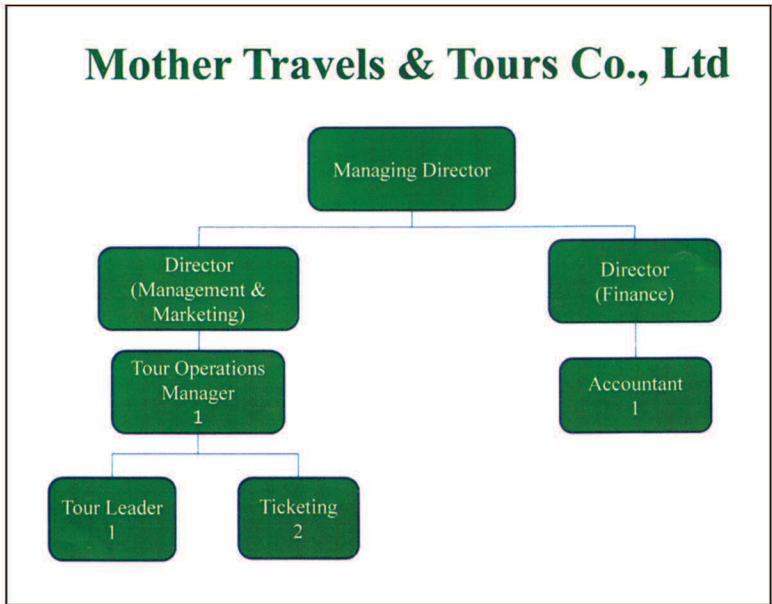
01-218462, 01-2300919, 01-2300929

EMAIL

mothertravel.tours2012@gmail.com
mothertravelsntours@gmail.com

WEBSITE

www.mothergroupmyanmar.com





VISION

Our vision is to realize the tremendous potential of Myanmar Tourism by providing eloquent services that consistently meet our customer's expectation & to develop and deliver quality, creative, innovative, competitive and socially responsible services in the region.

MISSION

Our mission is to provide outstanding quality services beyond expectation & serve as conveniently car tickets, air tickets and the best value trips.

OUR SERVICE VARIETIES

Express Bus Tickets, Air Tickets, Car Rental Services, Hotel Reservation and Tour packages (Inbound)

OUR CLIENTS

City Press, Mother Trading, Mother Construction & Other People

CERTIFICATE

Union of Myanmar Travel Association (UMTA) Certificate no.2154 (ACTM)

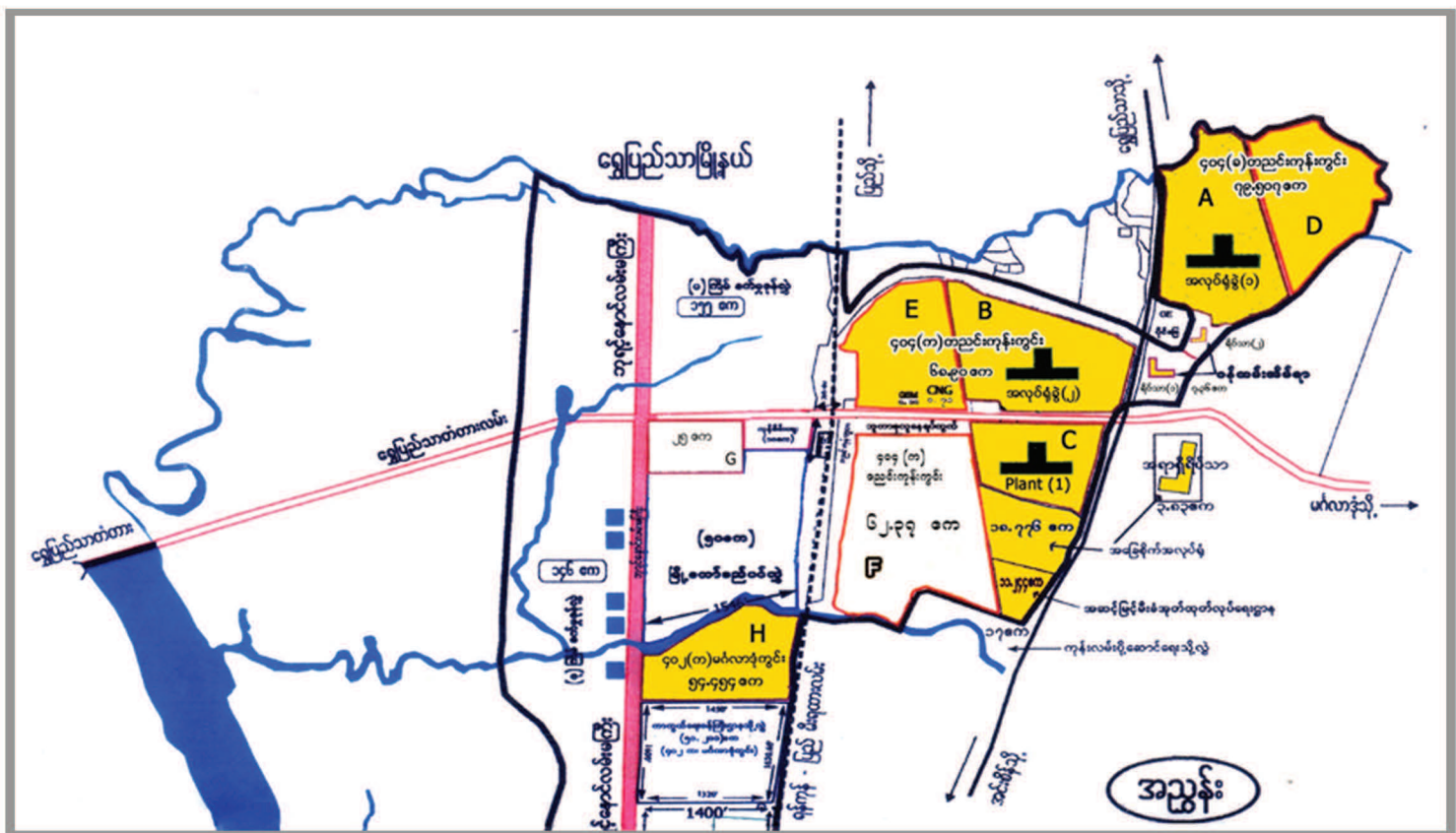
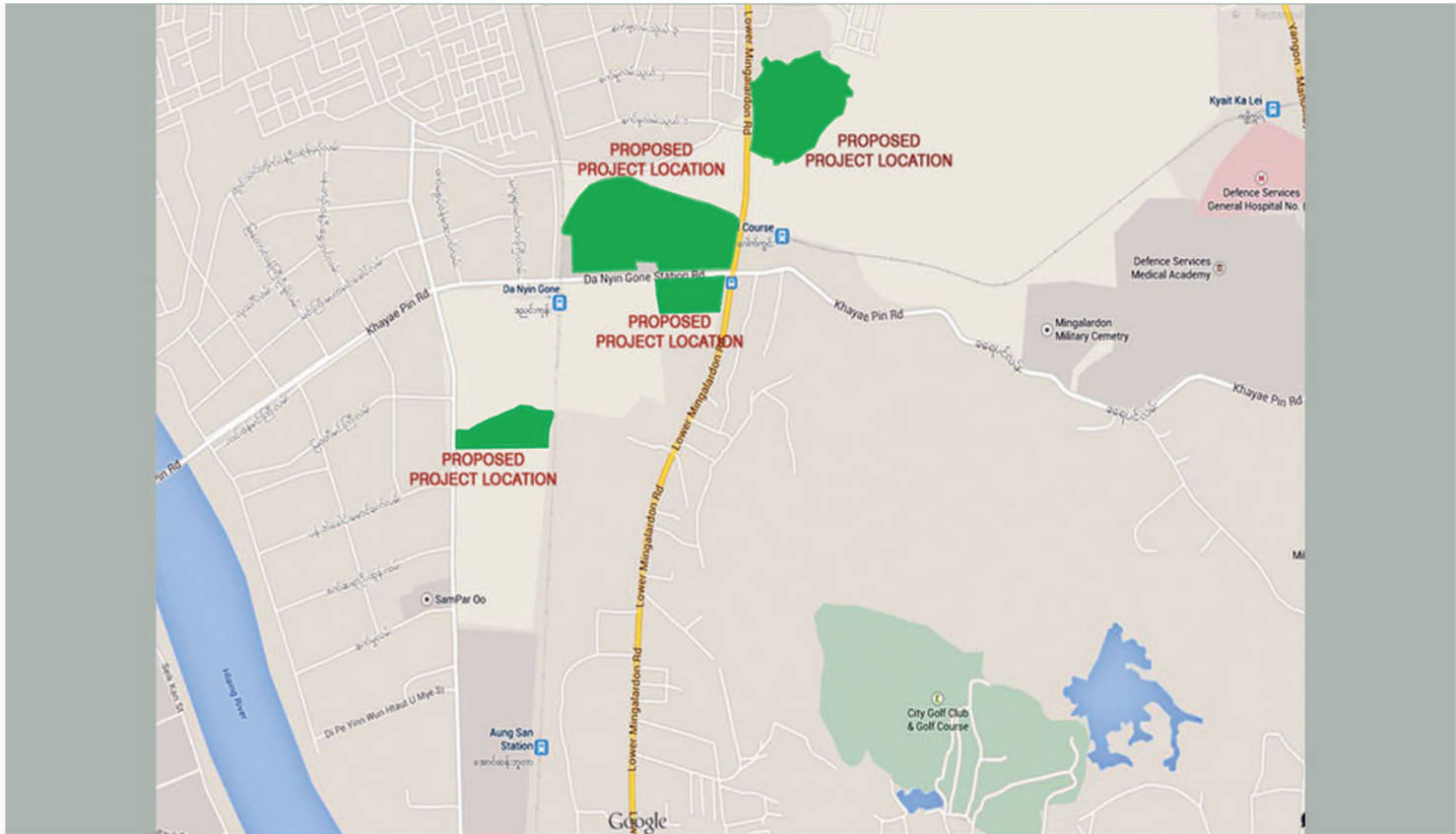
Ministry of Hotels & Tourism (Myanmar) Licence no.

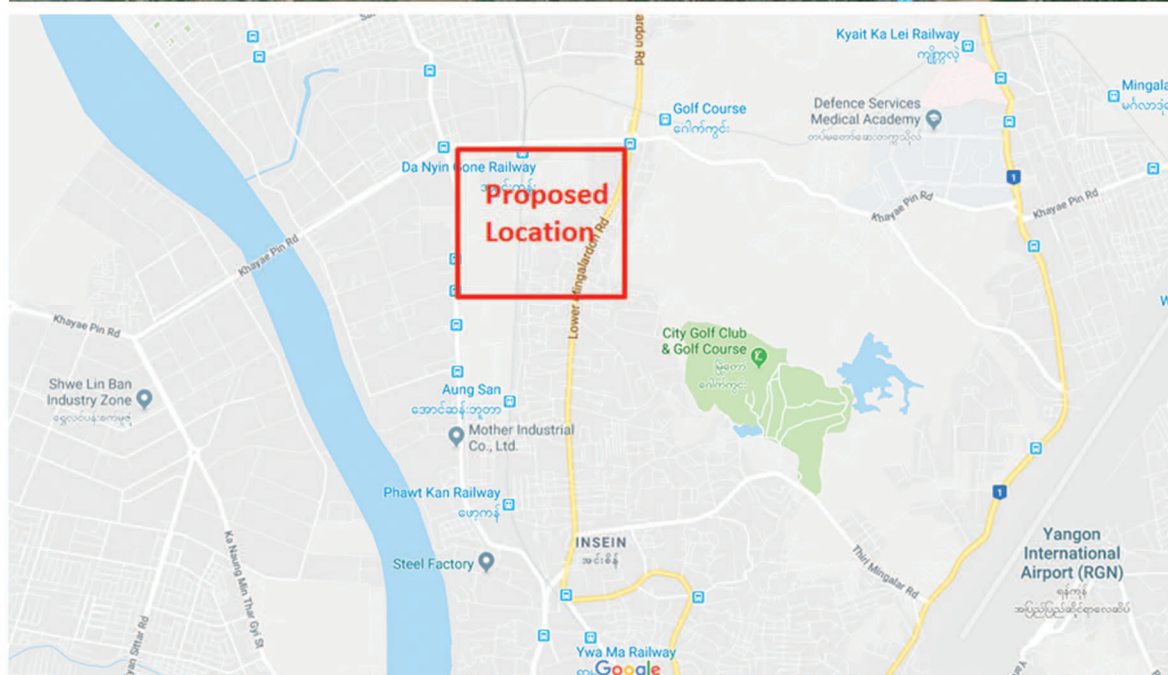
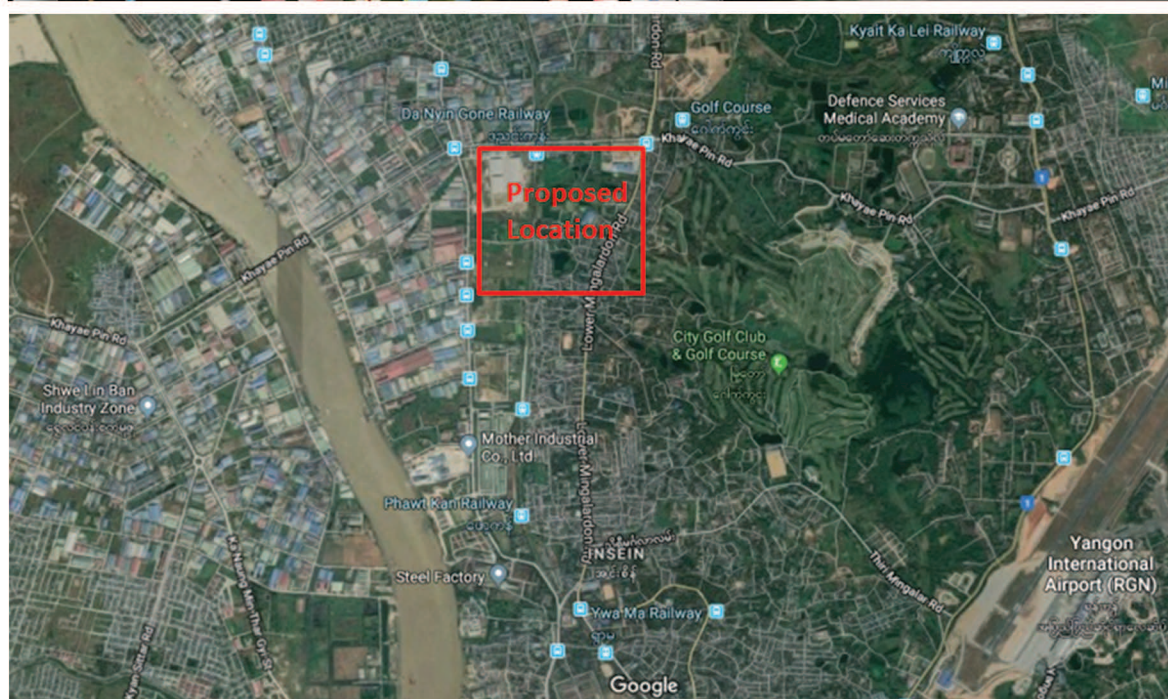
FUTURE PLANS



PROPOSED DANYIN GONE INDUSTRIAL ZONES

BY MOTHER INDUSTRIAL CO.,LTD





INFORMATION AND PROPOSED LOCATION

It is located in Danyingone Ward, Insein Township.

Ultimate Owner of the premise is Ministry of Industry, Heavy Industry (2) Enterprise.

Mother Industrial Co., Ltd. Is being awarded for long term leasing of the plots from Heavy Industry (2) Enterprise for 70 years leasehold.

Adjacent to Yangon Region Agricultural Sector Development Project. 15 Minutes drive away from Yangon International Airport. Strategically located and easily accessible from major roads such as Shwepyithar Bridge Road, Insein Road, Lower Mingalardon Road and Khayae Pin Road.

Plot - A, B, C, D, E and H are available for rent which

is near with Dayingone Wet Market.

Neighboring (500 meter away) with

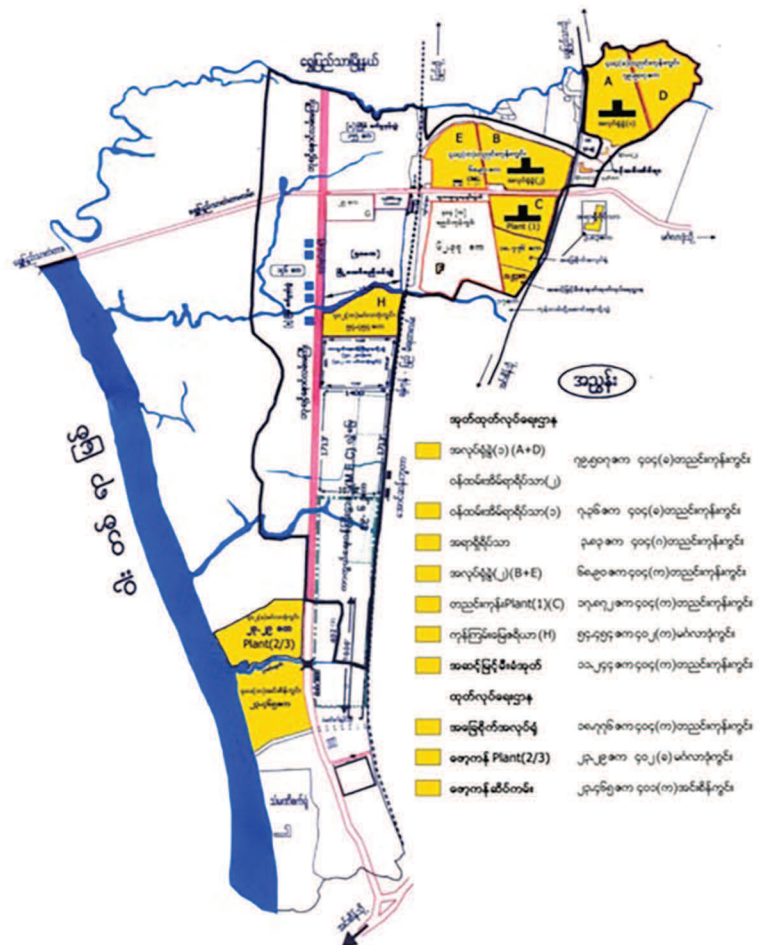
Yangon Golf Club, KBZ Bank, AYA Bank,

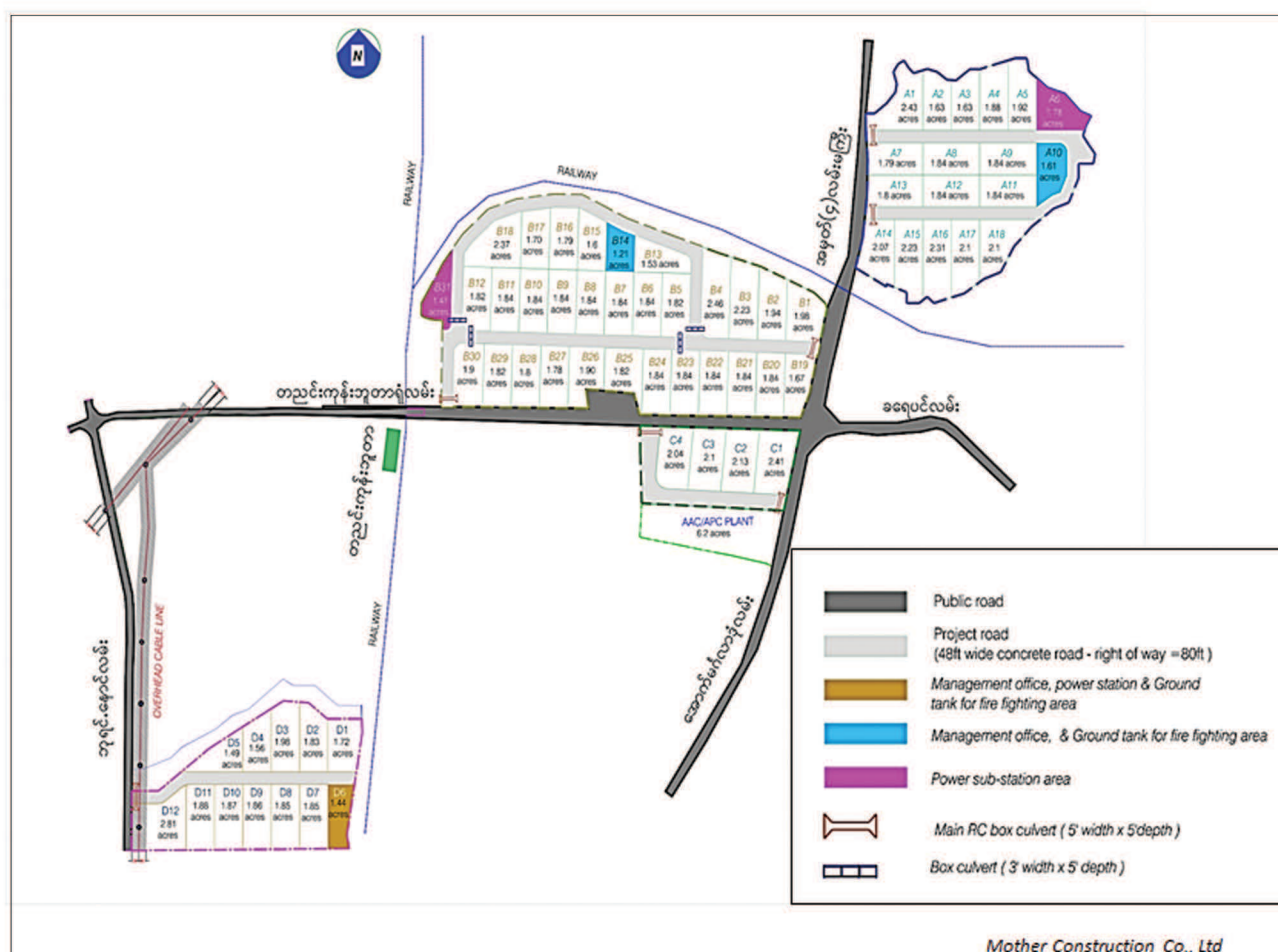
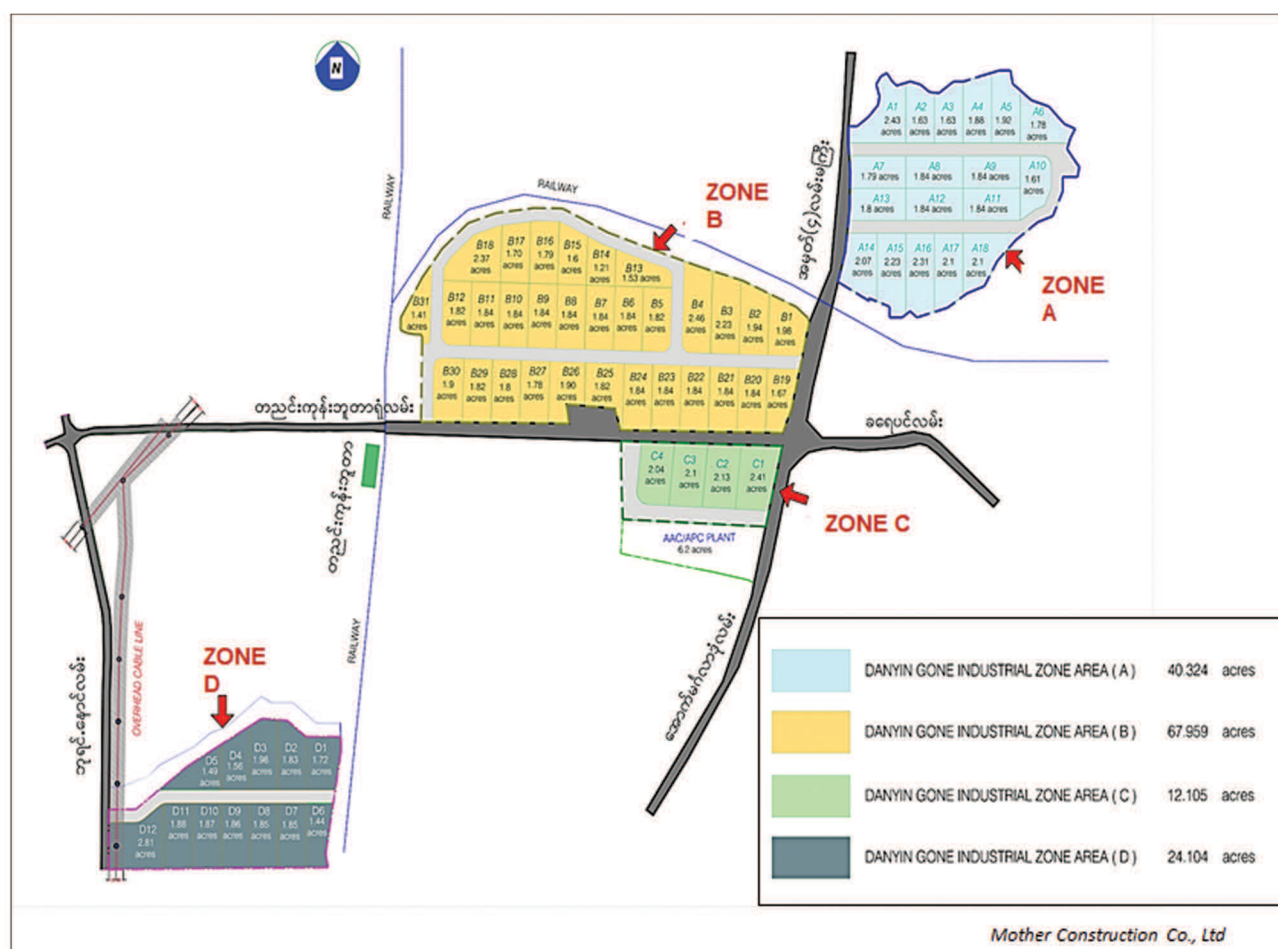
CB Bank, Blue Mountain Factory, Grand

Royal Factory, Sampar Oo Purified

Drinking Water Factory and Myanmar

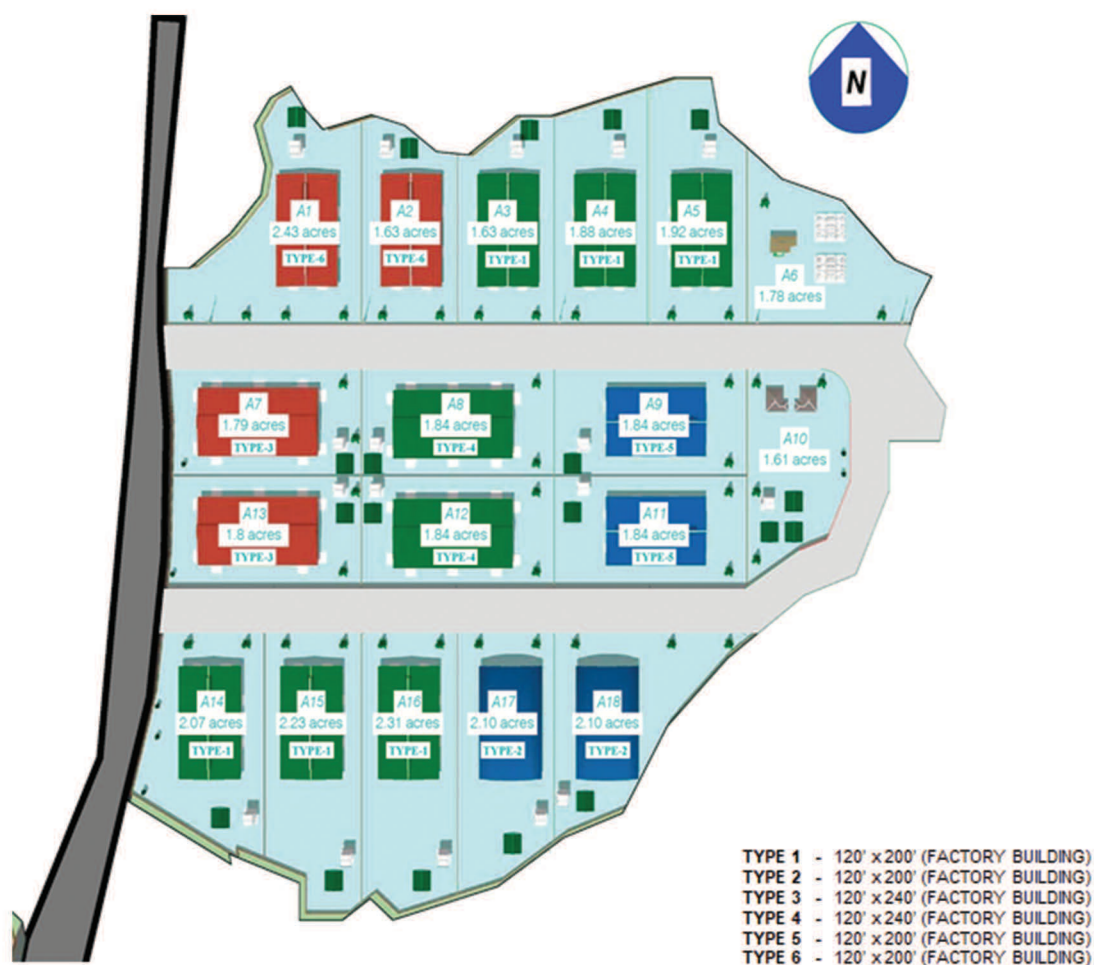
Economic Corporation Tyre Factory.





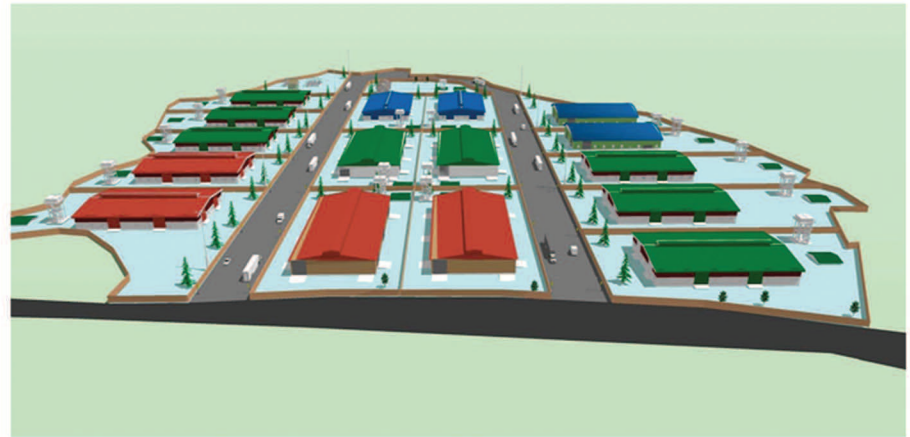


INDUSTRIAL ZONE A

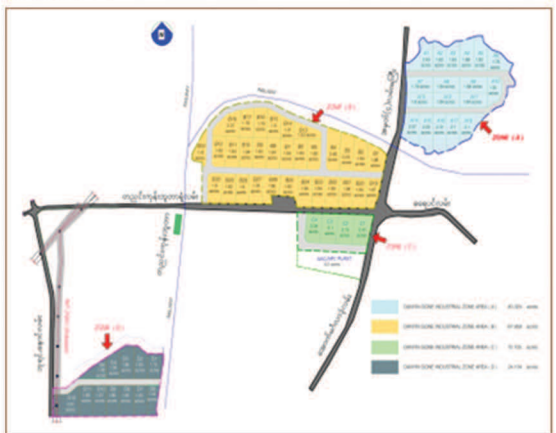


INDUSTRIAL ZONE A

VIEW 1



VIEW 2



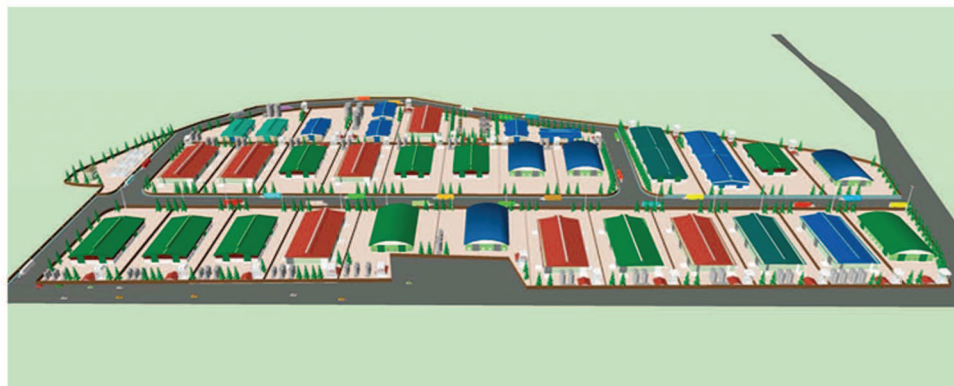
INDUSTRIAL ZONE B



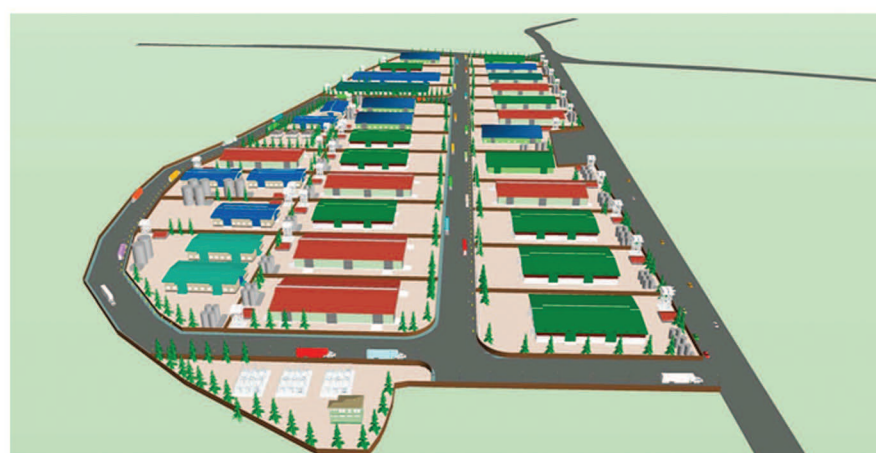
- TYPE 1 - 120' x 200' (FACTORY BUILDING)
- TYPE 2 - 120' x 240' (FACTORY BUILDING)
- TYPE 3 - 120' x 200' (FACTORY BUILDING)
- TYPE 4 - 120' x 400' (FACTORY BUILDING)
- TYPE 5 - 80' x 160' (FACTORY BUILDING)

INDUSTRIAL ZONE B

VIEW 1



VIEW 2



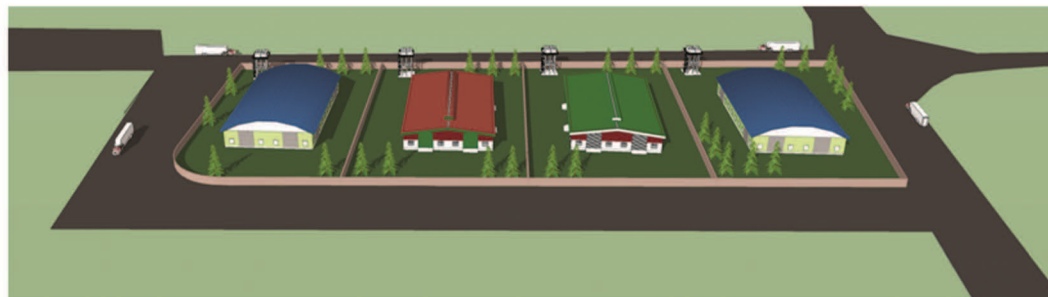
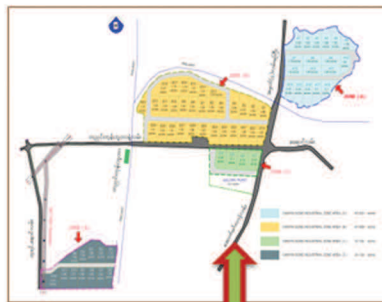
INDUSTRIAL ZONE C



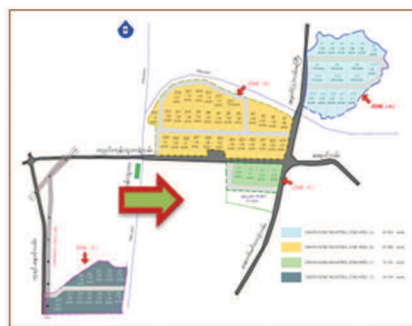
- TYPE 1 - 100' x 120' (FACTORY BUILDING)
- TYPE 2 - 120' x 200' (FACTORY BUILDING)
- TYPE 3 - 40' x 100' (FACTORY BUILDING)
- TYPE 4 - 90' x 100' (FACTORY BUILDING)

INDUSTRIAL ZONE C

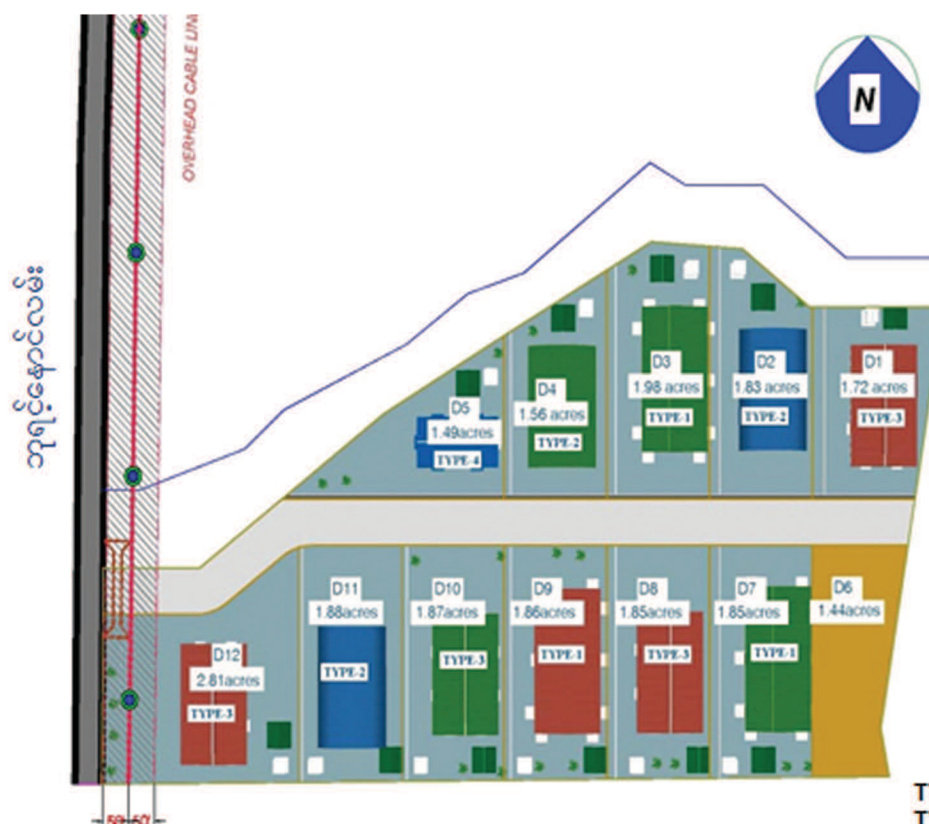
VIEW 1



VIEW 2



INDUSTRIAL ZONE D



- TYPE 1 - 120' x 240' (FACTORY BUILDING)
- TYPE 2 - 120' x 200' (FACTORY BUILDING)
- TYPE 3 - 120' x 200' (FACTORY BUILDING)
- TYPE 4 - 80' x 150' (FACTORY BUILDING)



The map shows the proposed development area in the vicinity of the Myanmar National Highway. The map includes a legend with four color-coded zones and their dimensions:

- Green (Zone 1): 10,000 sqm
- Yellow (Zone 2): 10,000 sqm
- Light Green (Zone 3): 10,000 sqm
- Dark Green (Zone 4): 10,000 sqm

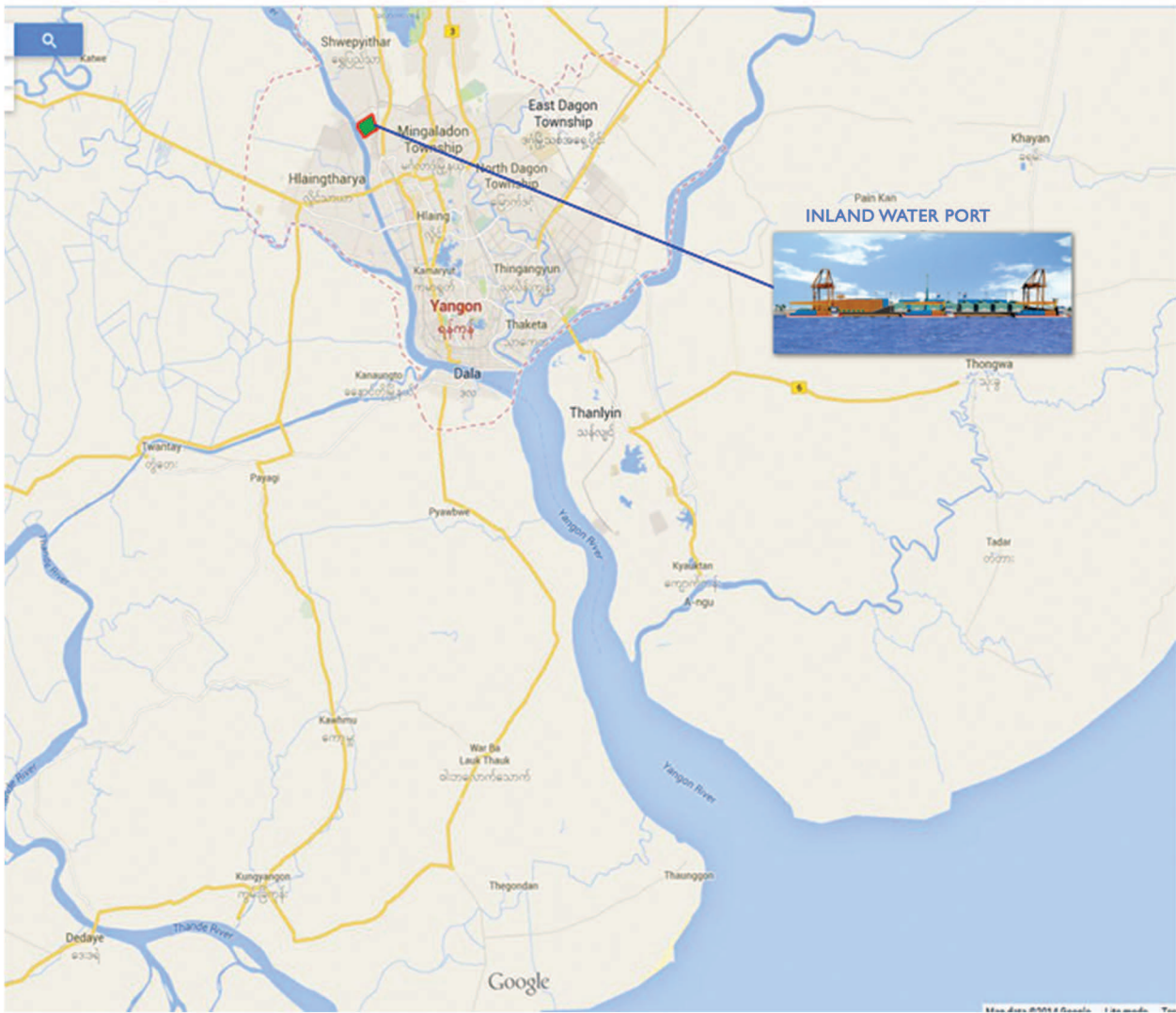
The map also shows the Myanmar National Highway and the proposed development area. A large red arrow points to the Green Zone (Zone 1) area.



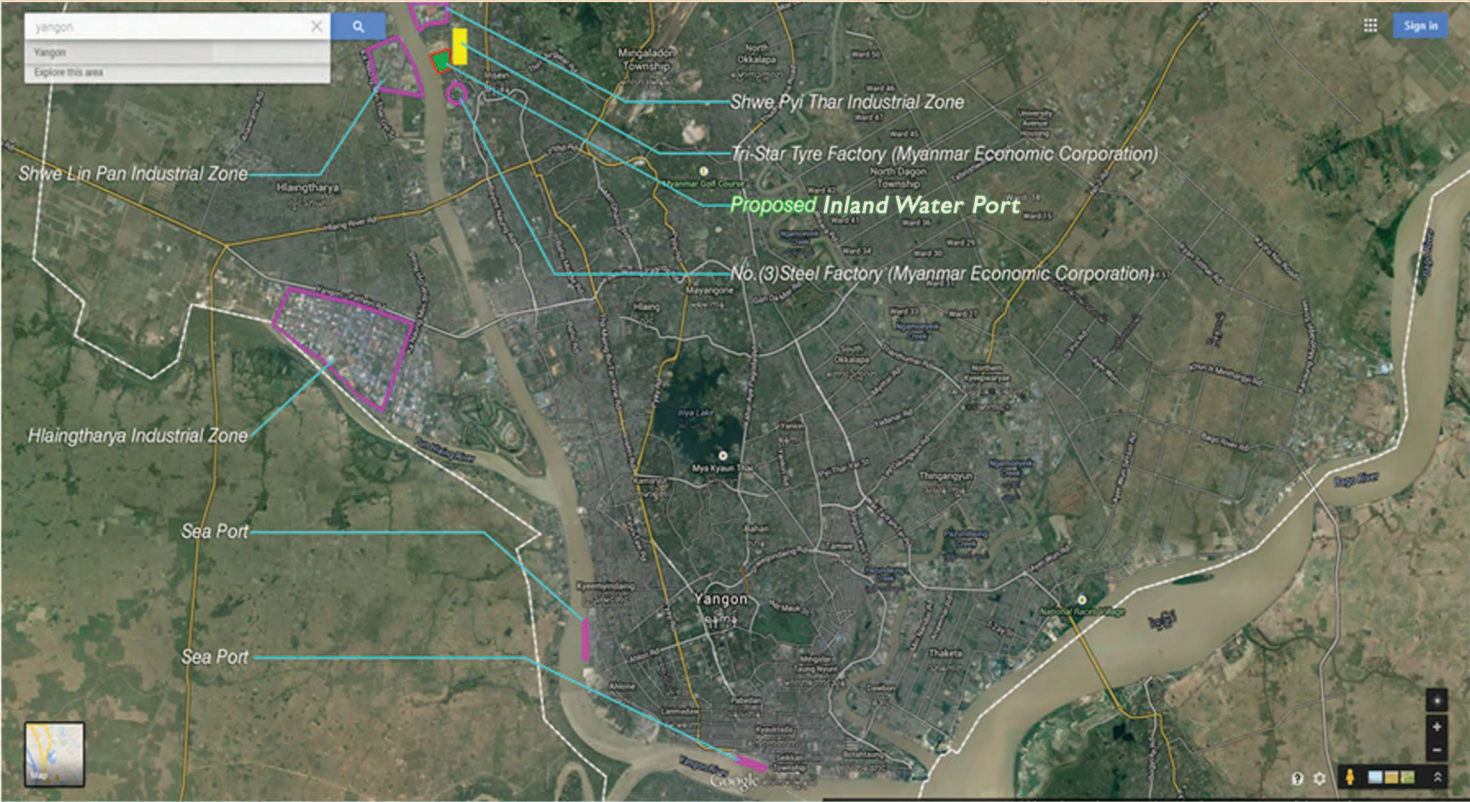
Phawt Kan



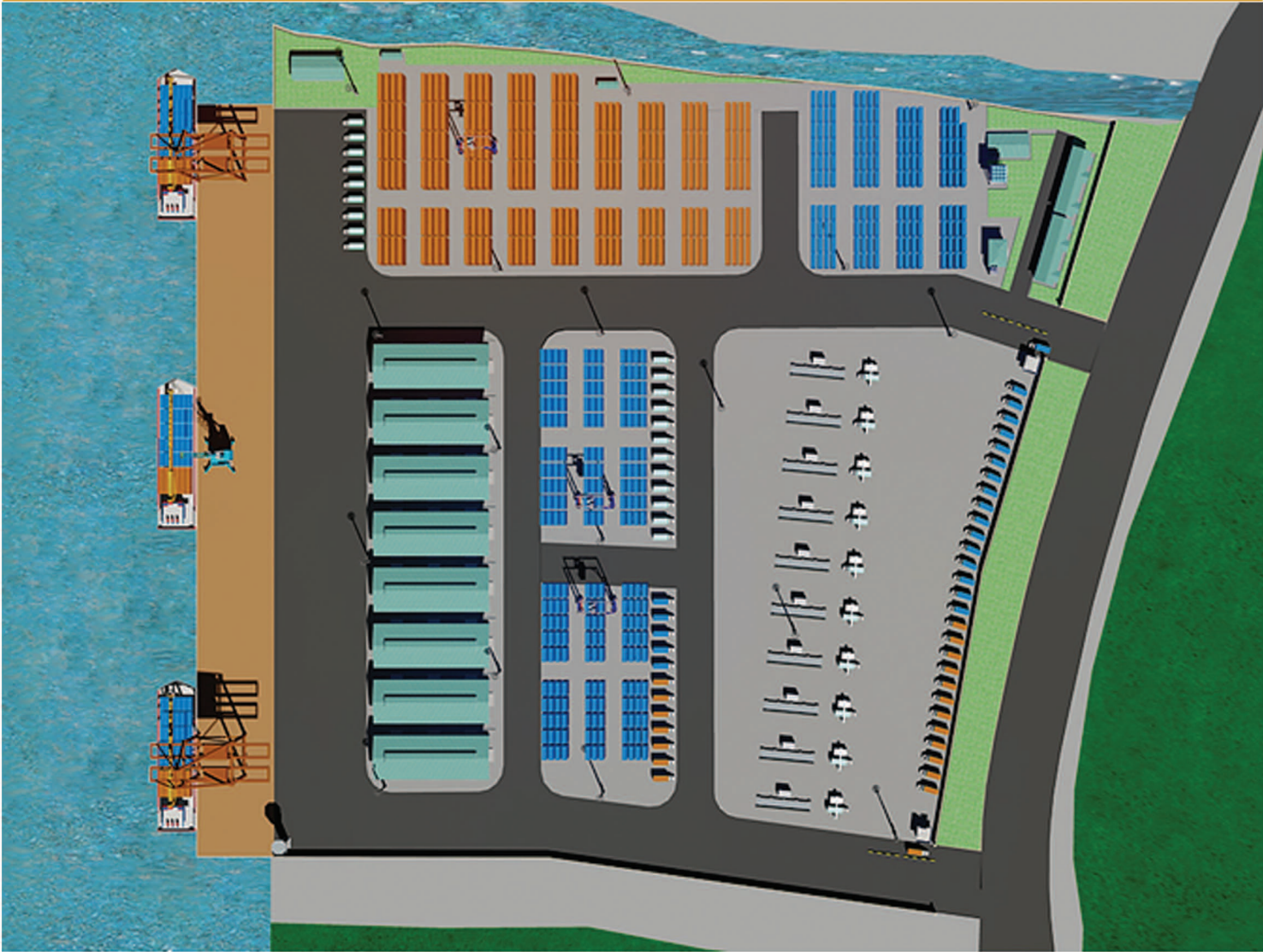
LOCATION PLANT 1



LOCATION PLANT 2



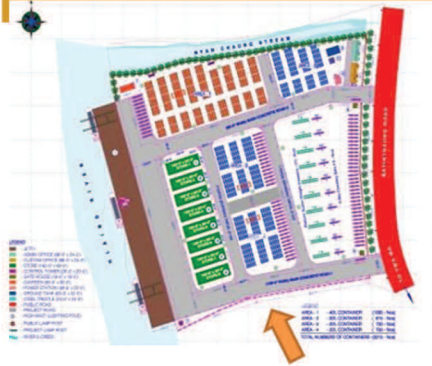
PLANT VIEW



VIEW 1 (FROM HLAING RIVER)



VIEW 2 (FROM MAIN ROAD)



VIEW 3 (FROM PALE ROAD)



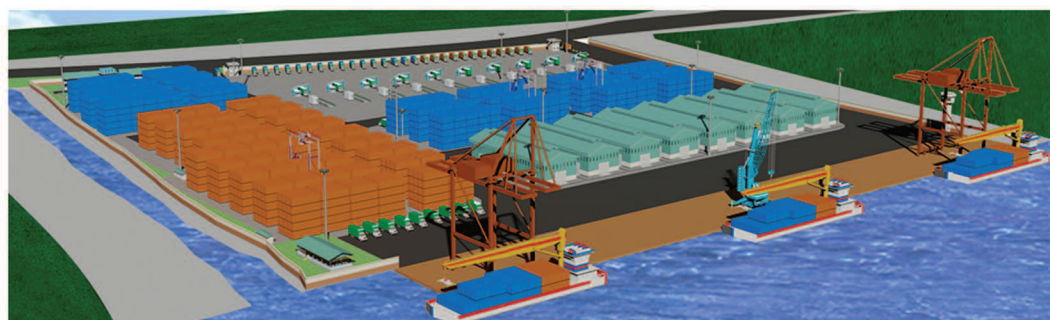
VIEW 4 (FROM NYAN CHAUNG STREAM)



VIEW 5 (FROM CORNER OF PALE ROAD & MAIN ROAD 1)



VIEW 6 (FROM CORNER OF HLAING RIVER & NYAN CHAUNG STREAM)

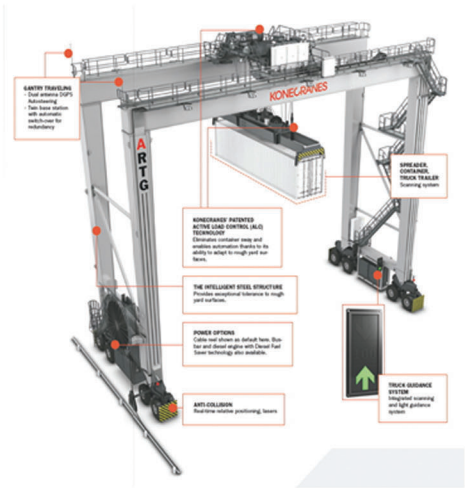


JETTY (1120' X 125')



ADMINISTRATION OFFICE (96' X 24')



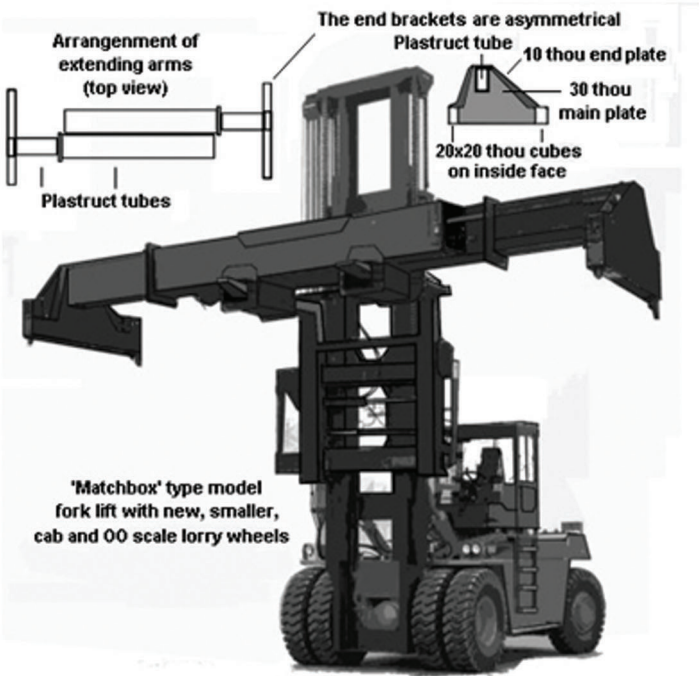


SOME TYPES OF GANTRY CRANE

SUPPORTED MACHINES



SOME TYPES OF FORKLIFT



Fig___ Mast lift truck adapted for handling RCH containers

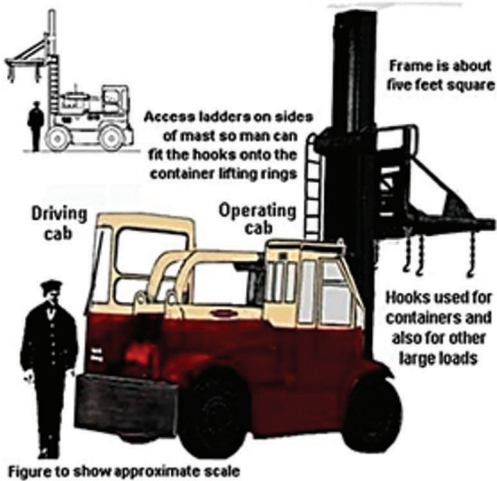


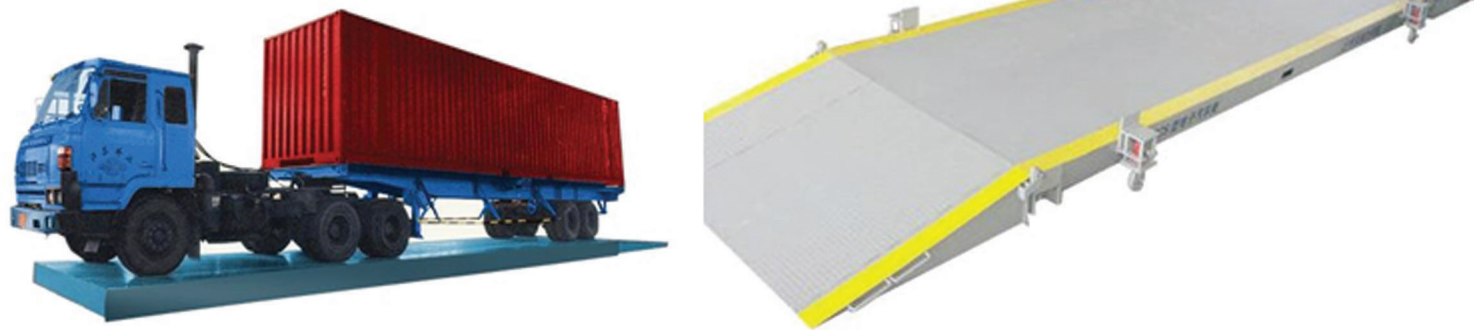
Figure to show approximate scale

SOME TYPES OF FORKLIFT



SUPPORTED MACHINES

TRUCK SCALE



SOME TYPES OF TRUCK SCALE
(WEIGHBRIDGE)

X-RAY MACHINE



INLAND CONTAINER CARRYING BARGE



ကျွန်ုပ်တို့အားလုံးကို အမေကဲ့သို့ ခွေးထွေးစေတာ
MOTHER GROUP OF COMPANIES ရဲ့ စေတနာပါ . . .

Since its corporation in 1997, Mother group has seen tremendous growth. We have built a strong presence in Myanmar and are constantly exploring new business opportunities.

We are firm believers in enriching the lives of our employees, building sustainable businesses and forming long-term partnerships with other organizations that share similar interests with us.

Thank You





Mother Finance

No.44/46, 2nd Street, Lanmadaw Township, Yangon.

Tel : +95 | 2300919, 2300929, 218462

Email : mothertrading2015@gmail.com



MOTHER
GROUP OF COMPANIES